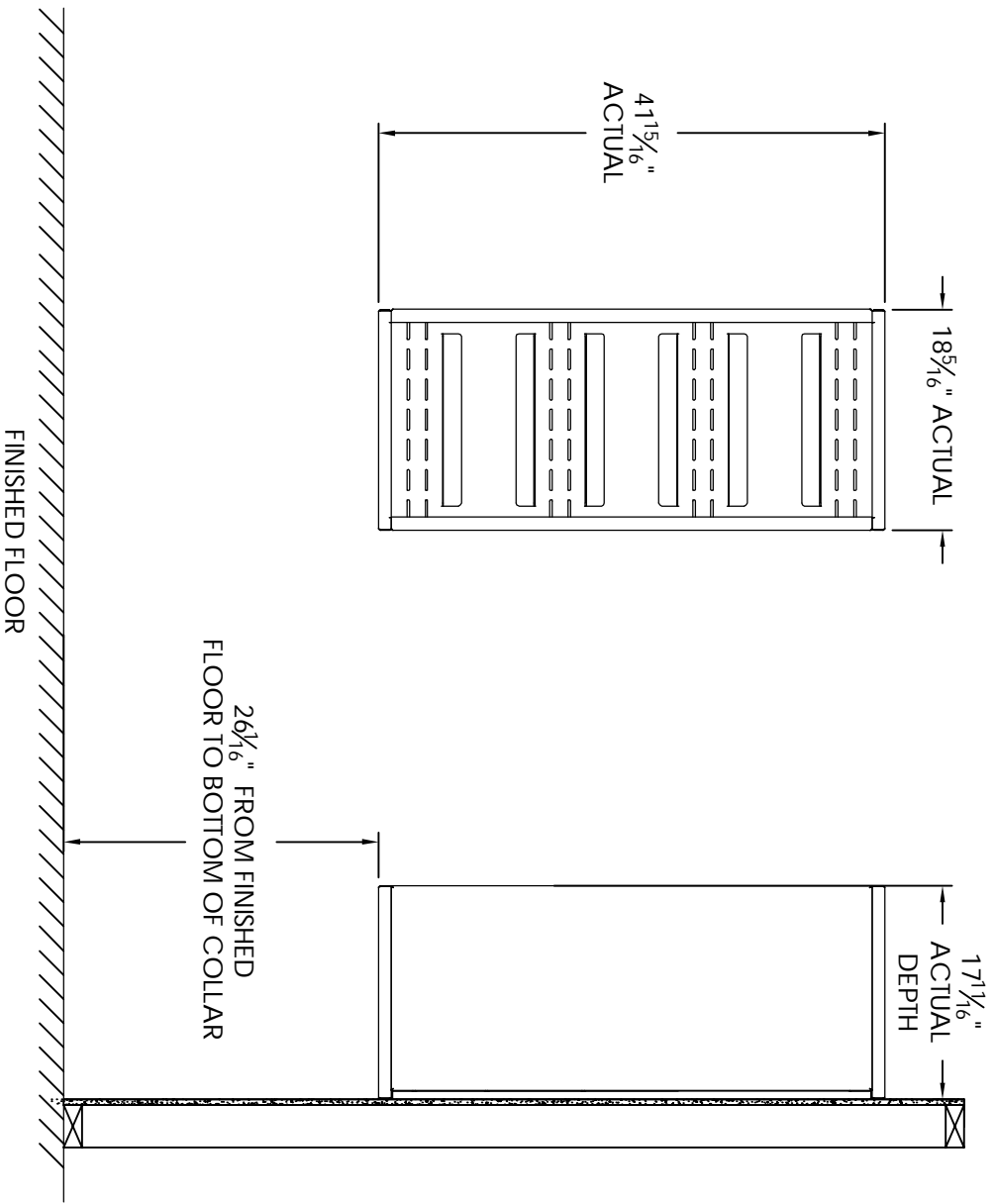


# versatile™ 4C Surface Mount Collar, SM11S



- Notes:
1. Designed to mount Florence Versatile™ 4C mailbox single column 11-High Suite modules (sold separately).
  2. For use with front loading modules only.

<b>PRODUCT SERIES: VERSATILE™ 4C SURFACE MOUNT COLLAR</b>			
<b>AF FLORENCE</b> manufacturing company		5935 Corporate Drive • Manhattan, KS 66503 www.florencemailboxes.com • (800) 275-1747 A GIBRALTAR INDUSTRIES COMPANY	
MODEL	SM11S	REV	B
SCALE	NONE	LAST REV DATE	7/02/2014
DRAWING NUMBER	SM11SCS	DRAWN BY	TNS